

THE CREATION OF THE FIRST COAST WELL-BEING INDEX

In Northeast Florida, the vision for community development took a significant step forward through the efforts of the [Regional Community Institute](#) (RCI). Established as a non-profit organization, RCI is dedicated to navigating the policy-related challenges faced by the region.

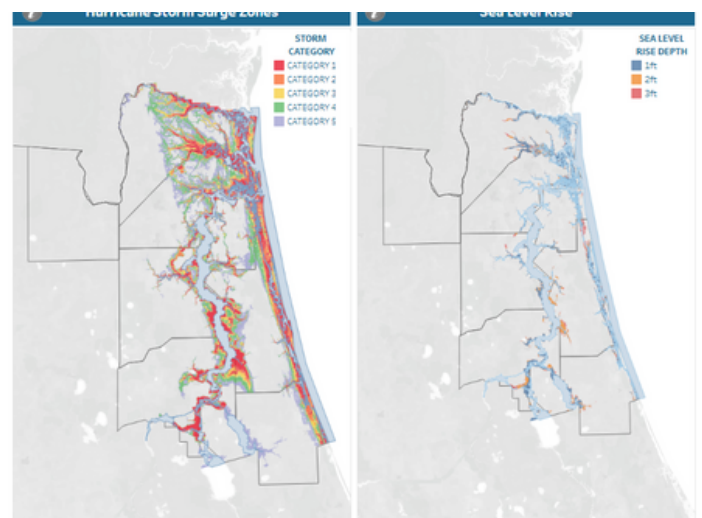
In 2009, RCI orchestrated an important event, [Reality Check First Coast](#), which convened 300 regional leaders.

First Coast Wellbeing Index	
People Population Hospital Beds, Rate Per 100,00 Population Physicians, Rate Per 100,00 Population ALICE Survival Budgets Population with Health Insurance	Community Farmland Fishing Locations Waterfront Florida Program Designated Communities Local Parks State Parks National and State Forests Commercial and Recreational Fish Landings
Nature Land Use Tree Planters Water Consumption Agricultural Irrigation Acreage Timberland Acreage	Prosperity Access to Broadband Kindergarten Readiness Number of Jobs Wages by Occupation Employment
Mobility Access to Transit Travel Time Reliabilities Bicycle Crashes Pedestrian Crashes	Resiliency Storm Surge Levels Sea Level Rise
Data Sources	
<small>This page cites the sources used to create the maps, charts, and tables in this dashboard.</small>	

This gathering aimed to raise awareness about the anticipated growth in Northeast Florida, projecting an influx of 1.6 million residents and the creation of 650,000 jobs by the year 2060. The discussions centered on the pressing needs of housing, transportation, infrastructure, and recreation.

The leaders recognized that a collective approach was vital; each jurisdiction would benefit from a consensus on the region's future. The outcome of these discussions was the [First Coast Vision](#), which was documented and released in 2011, detailing actionable steps towards a sustainable community.

In 2021, RCI established a committee to evaluate the impact of the First Coast Vision. Their findings highlighted that the most significant achievement was the collaboration fostered among community members. However, to sustain this momentum, measurable indicators of success were essential.



Reuniting the partners involved in Reality Check, the group deliberated on the data necessary to gauge the region's progress. This led to the creation of the First Coast Well-Being Index (FCWI), designed to reflect the diverse policy focus in Northeast Florida. The index incorporates a mix of standard metrics on population and mobility, alongside unique data points on fishing and tree planting—elements identified as vital in earlier policy discussions about agriculture and natural resources.

The FCWI is a dynamic tool, continuously evolving as community needs and policy discussions change. It serves as both a benchmark and a guiding framework for the region, ensuring that Northeast Florida remains committed to a collaborative, informed approach to future challenges and opportunities.

THANK YOU TO ALL OF THE PARTNERS THAT MADE THIS A SUCCESS

